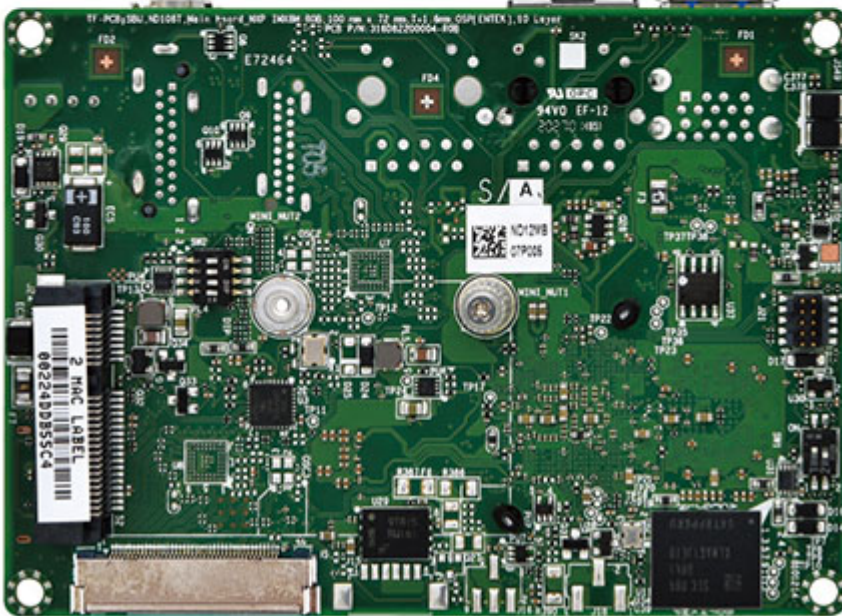
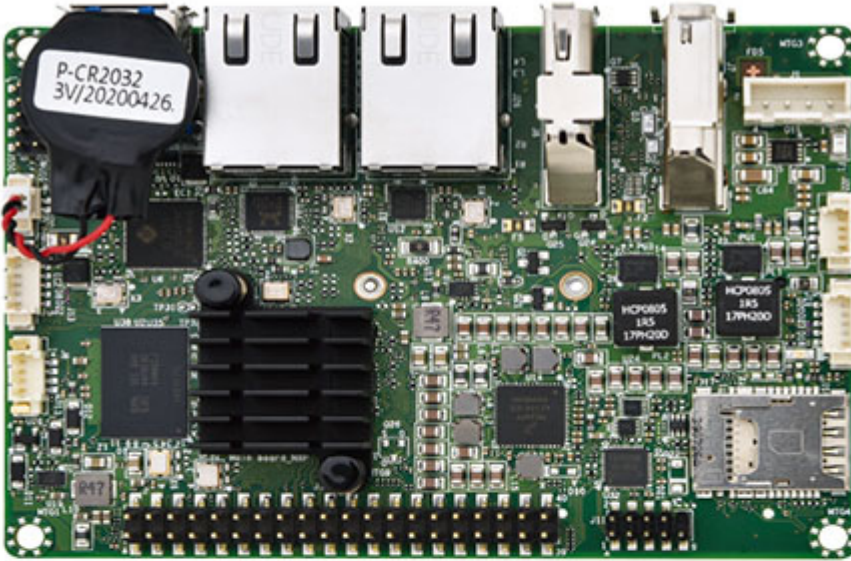


259.95 EUR

incl. 19% VAT, plus [shipping](#)

- Pico-iTX !
- NXP i.MX8M !
- 4GB DDR4 !
- 32GB eMMC !



- NXP i.MX8M Dual Core & Quad Core Processor
- 1GB LPDDR4 Memory (Options for 1GB / 2GB)
- 8GB eMMC Storage (Options for 8GB / 16GB)
- 2 x Giga LAN
- 1x HDMI (4K), 1 x DisplayPort(FHD)
- Support 1 x Mini PCIe expansion slot
- Support 1 x Raspberry Pi fully Compatible 40-pin Header
- Up to 2 x USB 3.0, 2 x USB 2.0, 1 x COM port (x RS232/422/485) 12V DC Power Input
- 1 x COM Port

MECHANICAL

FORM FACTOR

Pico-iTX 2.5" SBC: 3.94" x 2.84"
(100 mm x 72 mm)

SYSTEM	PROCESSOR	NXP® i.MX8M Family: / 8M Quad (4 x Cortex-A53 @ 1.3GHz) / 8M Dual (2 x Cortex-A53 @ 1.3GHz)
	CHIPSET	i.MX8M SoC Integrated Singel Channel LPDDR4
	SYSTEM MEMORY	800MHz Memory Onboard with Options for 1GB / 2GB / 4GB)
	GRAPHICS	I.MX8 Integrated 1 x Realtek® RTL8111H Giga LAN / 1 x Realtek® RTL8211FD Giga LAN
	ETHERNET	
	I/O CHIPSET	Nuvoton NCT6683D
	AUDIO	Realtek® ALC5660
	EXPANSION SLOT	Mini PCIe Full / Half size (PCIe / USB)
	STORAGE	Onboard eMMC with Options for 8GB / 16GB / 32GB
	WATCHDOG TIMER	Yes
GRAPHICS	VGA	-
	DVI	-
	HDMI	Up to 4K (4096 x 2160) @60 Hz
	DISPLAYPORT	Up to FHD (1920 x 1080)@60 Hz
	LVDS	Up to FHD (1920 x 1080)@60 Hz
	eDP (Option)	-
	USB	2 x USB 3.0
REAR I/O	DISPLAY I/O	1 x DisplayPort 1.2 / 1 x HDMI 2.0
	AUDIO I/O	-
	LAN I/O	2 x RJ-45
	SERIAL PORT	-
	PS/2 PORT	-
	OTHERS	-
INTERNAL CONNECTORS	STORAGE	1 x Micro-SIM or Micro SD combo card slot
	USB	1 x USB 2.0 Port Header / 1 x USB 2.0 OTG port Header 1 x Backlight Connector / 1 x
	DISPLAY I/O	LVDS / 1 x LCD PWR Selection Header
	AUDIO I/O	1 x Audio Header (Mic-in & Line-out)
	SERIAL PORT	1 x RS232 / 422 / 485
	GPIO	-
	FAN	1 x 4-pin CPU Fan Header / 1 x 4-pin System Fan Header 1 x 8-pin ATX Power Connector / 1 x 24-pin ATX Power Connector
	POWER	/ 1 x AT / ATX Mode Select Jumper 1 x 40-pin General Purpose Header (Fully Compatible with Raspberry Pi 40-pin Header)
	OTHERS	*Raspberry Pi is a trademark of the Raspberry Pi Foundation

POWER REQUIREMENT	POWER INPUT	DC-in 12V (4-pin Power Connector)
	OPERATING TEMPERATURE	0 ~ 60°C (32 ~140°F)
	STORAGE TEMPERATURE	-20 ~ 70°C (-4 ~158°F)
ENVIRONMENTAL	OPERATING HUMIDITY	10% ~ 95% R/H (Non-condensing)
	CERTIFICATION	CE / FCC Class B
		Yocto Sumo (Kernel version 4.14.98) BSP Support / Android 9
OS	OS SUPPORT	Pie (Kernel version 4.14.98) BSP Support
PACKING LIST	PACKAGE	1 x Motherboard / 1 x Quick Installation Guide